

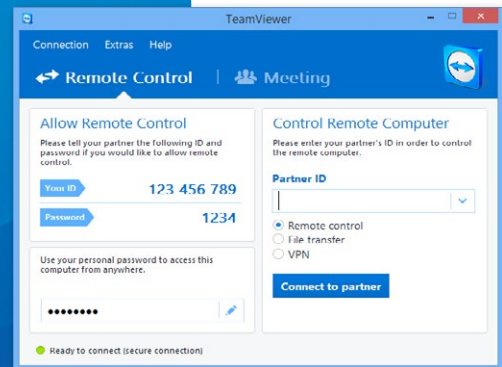


# TeamViewer – Spontaneous Support

You would like to offer spontaneous remote support?  
We will show you how in three easy steps.

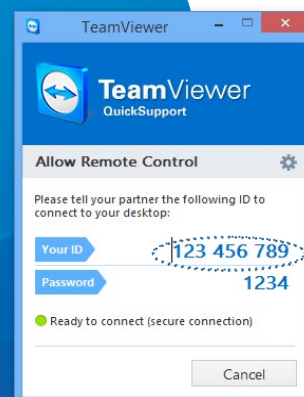
## 1 What you do

Download the TeamViewer software. To control remote computers, you will require the full version. Install it by simply following the instructions of the setup routine, and then launch TeamViewer.



## 2 What your partner does

Ask your partner to download and run the customer module TeamViewer QuickSupport.



<http://www.teamviewer.com/download/TeamViewerQS.exe>

## 3 Establish a connection

Enter your partner's TeamViewer ID (see picture in step 2) in the "Remote control" tab. Click on "Connect to partner", and enter your partner's password in the following dialog box in order to establish a connection.

